

**2000/2001** Relocation of the entire manufacturing section from Plant 1 to Plant 2; Plant 1 now solely Administration and Engineering.

**Spheres of operation:**

The Tuchenhagen Group's goods and services cover the following branches of industry:

- Dairy and milk processing
- General food processing
- Brewery industry
- Beverage industry
- Personal and health-care industry

Tuchenhagen is represented all over the world with a wide-ranging network of subsidiaries, branch offices and agencies.

The subsidiaries operate as independent marketing companies.

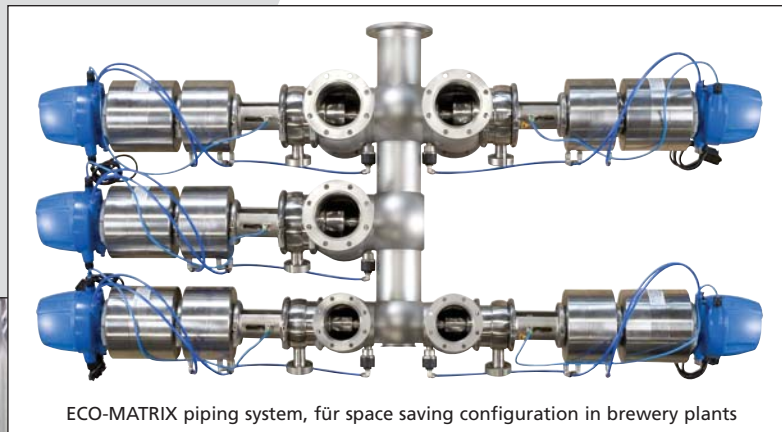
**2002** New structure for the GEA Group: The GEA Liquid Processing Division is disbanded.

Tuchenhagen is now part of the Process Equipment Division. Tuchenhagen Brewery Systems and Tuchenhagen Dairy Systems are part of the Process Engineering Division.

Tuchenhagen is today one of the world's leading component manufacturers for the brewery, beverage, dairy, food and juice industries and other sectors involving liquid processing. In the last few years Tuchenhagen has for example increasingly been able to establish itself in the pharmaceutical, biotech, cosmetics and fine chemicals sectors. Tuchenhagen's production programme today embraces process valves, valve blocks, in-line control and measurement technology, cleaners and pumps.

# 75 Years Tuchenhagen

**1931 – 2006**



ECO-MATRIX piping system, für space saving configuration in brewery plants



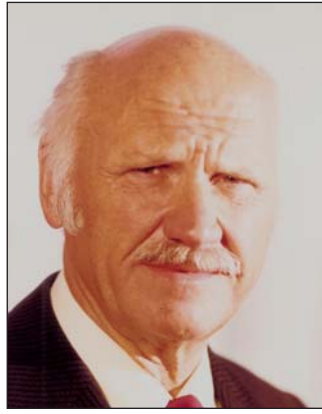
VESTA Multiport, equipped with sterile valves for pharmaceutical applications



Valve matrix with VARIVENT® mixproof valves in a dairy plant



Valve matrix with VARIVENT® mixproof valves and T.VIS® control modules installed in a brewery



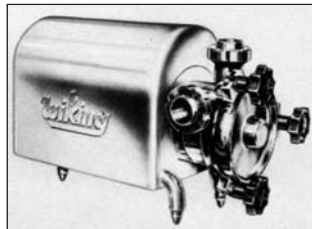
Otto Tuchenhagen (1908-1993)

TUCHENHAGEN was founded in 1931 in Kiel by Otto Tuchenhagen: the firm opened for business as an engineering consultancy for new dairies and dairy conversions. The many events in Tuchenhagen's 75 years of operation could easily fill a book – we would like to mark this important anniversary by briefly mentioning the major milestones in the company's history.

**Historical calendar:**

**1931** Company founded in Kiel by Otto Tuchenhagen. Engineering consultancy for new dairies and dairy conversions.

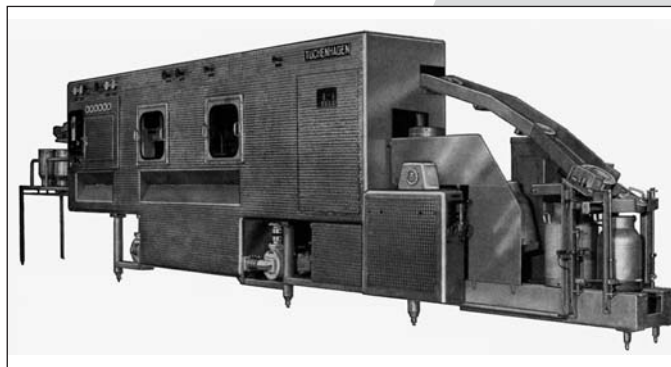
**1935** Company base moves to Hamburg.



Wiking centrifugal pump

More than 100 new dairies and conversions are carried out from here. In-house development of chromium nickel steel products for the dairy industry, milk pumps.

**1939** Automatic churn washer launched for the dairy industry.



Fully automatic milk can washer

**1943** Company moves to Büchen. All the offices and workshops in Hamburg had been destroyed by bombing.

**1950** Special new development:



Automatic transfer switch designed for milk pasteurisers. So begins Tuchenhagen's entry into the automation of food-processing plants. The aim behind automation is to ensure product quality.

Products developed specially for this purpose includes: cleanable pumps, valves and cleaners, cleaning plant for tanks, machines and whole production units, washing machines for churns and transport drums; development and building of milk tankers.



Washer



Milk tanker

SEIT 1950  
**TUCHENHAGEN - FERNSTEUER-VENTILE**  
FÜR GETRÄNKE UND CHEMICALIEN

Hand-Hilfsbetätigung  
Oberenteil abnehmbar ohne jede Demontage von Luft- oder Rückmelde-Leitungen  
Rückmeldung am festen Unterteil  
Halterung birgt gleichzeitig die Steuer-Anschlüsse

- Vollautomatische Steuerung aller Produkt- und Reinigungswege
- Projektierung und Lieferung kompletter Anlagen
- Schaltpulve mit Fließweg-Kontrollen
- Für jeden Zweck das genau richtige Ventil
- Einfachste Montage
- Größte Betriebssicherheit
- Fach-Ingenieur-Beratung in allen Gebieten

1000-fach bewährt!

OTTO TUCHENHAGEN 1931 2059 BUCHEN BEZ. HAMBURG  
TEL. 041 55/721 - TELEX elbu 2-189419

Brochure of the 50ties for valves

**1967** Development of the first cleanable mixproof valve. Tuchenhagen valves are notable for  
– maximum functional reliability,  
– absolute CIP-capability,  
– optimum maintenance-friendliness for permanently piped and automated processing plant.

**1967** A department for remote control and automation is set up. Entry into process plant construction: Germany's first automated dairy with mixproof valves is built by Tuchenhagen.

**1972** Entry into the brewery business with the completion of the first turnkey project for the Bavaria St. Pauli Brewery, Hamburg.

**1975** The VARIVENT® mixproof valve type D is introduced to the market.



Mixproof valve, series T, from 1967



VARIVENT® mixproof valve, type D, from 2006

up to **1982** Improvement of automation technologies and implementation of plant construction projects in the dairy, brewery and other foods sectors.

**1983** Hans-Otto Mieth buys 95% of the Company's shares from Otto Tuchenhagen. Part of the Company is sold to ABEL Pumpen. Subsidiary companies established world-wide.

**1985** Acquisition of Schwarte in Ahlen. Manufacture of milk tankers by the Schwarte and Otto Tuchenhagen companies is concentrated at Schwarte, resulting in the company obtaining a 50% market share. Schwarte also manufactures equipment for processing milk and cheese.

**1986** Acquisition of Göbel in Stuttgart with its manufacturing range of industrial washing machines and pasteurisers.

**1988** Hans-Otto Mieth buys the last 5% of Company shares.

up to **1989** Main focus in further development and manufacture of: VARIVENT® valves, measurement and automatic control and cleaning technology. All products are supplied in CIP-compatible form.

Engineering departments enlarged and plant construction extended to almost all branches of the food and beverage industries, the pharmaceutical, cosmetics and chemical industries.

Tuchenhagen defines the services it offers for plant construction: process integration based on a joint-supplier strategy.

Subsidiaries established in: USA, Canada, England, Ireland, Holland, Denmark, Spain, France, Japan, South Africa, Italy. Engineering and sales offices in Munich, Karlsruhe and Düsseldorf.

**1989** A department is set up for the application of membrane technology for dairy products, breweries, water treatment for waste-, product- and drinking-water. Plant 2 is purchased (ca. 18,000 sq. metres of office, manufacturing and storage space). Development of automated valve production.

**1995** Sale of Tuchenhagen to GEA. Three companies are formed: Tuchenhagen, Tuchenhagen Brewery Systems and Tuchenhagen Dairy Systems.